



# Traffic Cone

18", 3 LB Wide Body, Orange

High-visibility, fluorescent orange PVC traffic safety cone with square base. Stable, portable, and stackable. Easy-grip top. Designed for indoor and outdoor applications. Ideal for marking hazards and points of interest. Can be used to block areas, guide pedestrians, and direct traffic. Compliant with DOT standards. Made with recyclable and post-consumer materials.

## Features & Functions

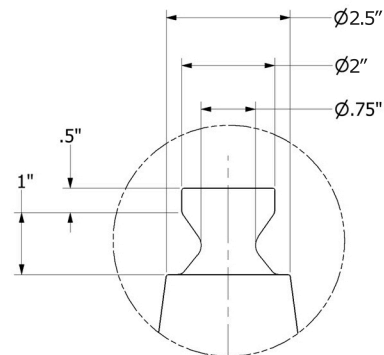
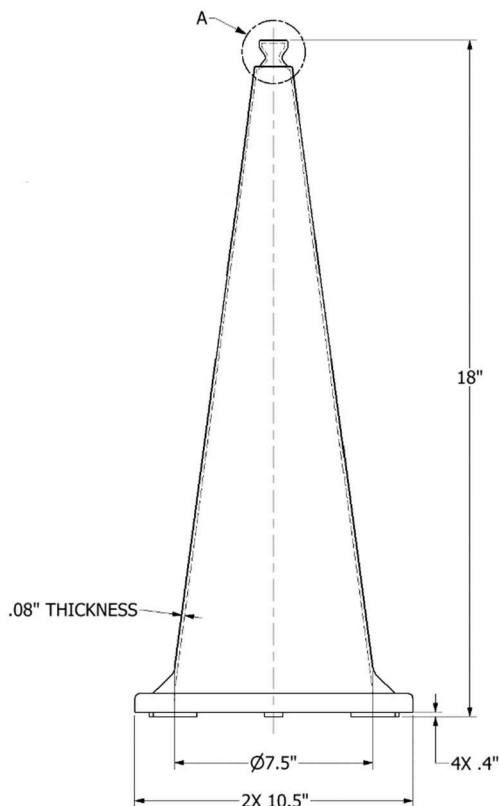
- Full Cone H-Viz Color
- Suitable for use in temperatures between -13°F and 100°F (-25°C and 38°C)
- Smooth, flexible, crush-proof shape
- Interlocked base and body
- Tip-resistant base

## Product Specifications

- General Dimensions: 10.5 X 10.5 X 18 inches (27 X 27 X 46 cm)
- Total Weight: 3 LB (1.4 kg)
- Cone Material: fluorescent orange injection-molded PVC, 100% recyclable
- Base Material: black injection-molded PVC, made from 100% post-industrial recycled PVC

## Part Dimensions

(NOT TO SCALE)



DETAIL A  
CONE TOP