



# Traffic Cone

36", 12 LB Wide Body, Orange

High-visibility, fluorescent orange PVC traffic safety cone with two reflective collars. Stable, portable, and stackable. Easy-grip top. Designed for indoor and outdoor applications. Ideal for marking hazards and points of interest. Can be used to block areas, guide pedestrians, and direct traffic. Compliant with DOT standards. Made with recyclable and post-consumer materials.

## Features & Functions

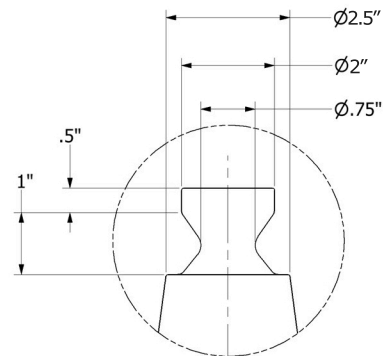
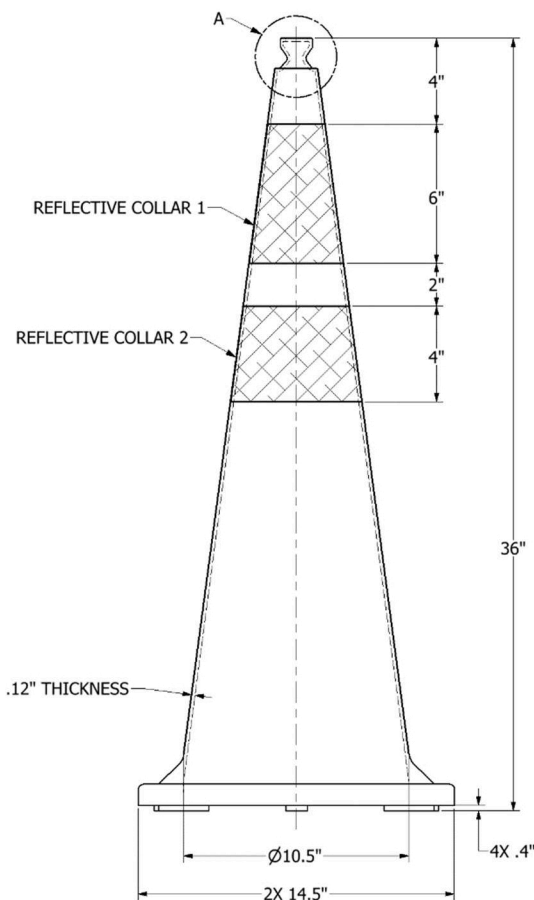
- Reflective wet or dry
- Two peel-resistant, retroreflective layers
- Suitable for use in temperatures between -13°F and 100°F (-25°C and 38°C)
- Smooth, flexible, crush-proof shape
- Tip-resistant base

## Product Specifications

- General Dimensions: 14.5 X 14.5 X 36 inches  
(37 X 37 X 91 cm)
- Total Weight: 12 LB (5.4 kG)
- Cone Material: fluorescent orange injection-molded PVC, 100% recyclable
- Collar Material: 3M™ 3340 Reflective Aluminum Foil

## Part Dimensions

(NOT TO SCALE)



DETAIL A  
CONE TOP